

GREAT NEWS

In July of 2018, the ALLIANCE STAMP MINISTRY, with God's help, reached

ONE MILLION DOLLARS !!!

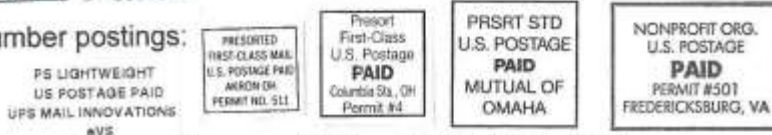
All of these funds have supported the spread of the GOSPEL
in Spanish by radio waves and the printed page since 1972.

CHANGES for 2019

(1) Please **DO NOT SEND** metered mail:



(2) Please **DO NOT SEND** permit number postings:



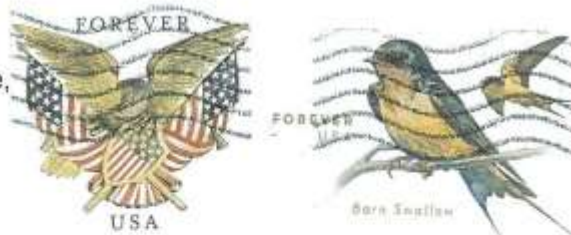
It costs you more in postage to send these items. They are of little value to our dealers.

We need the Pre Sorted, Non Profit, Bulk Mail and Pre Sorted Standard STAMPS

stuck on the envelopes.

(3) If the postage has been printed into the envelope,
not onto the envelope, it is called a Cut Square.

We can use these stamps.



(4) We continue to make use of **DAMAGED STAMPS!**

(5) Dealers still require a border of 1/4 to 1/3 inch of paper around the stamp

If the border is less than that, the stamp can still be sold, but at a lower price.

The stamps are sold by the pound and you are cutting off our profits.

(6) We still have a market for regular postage that is **UNCANCELLED**.

Thank you for your faithful support of this – God's Unique Ministry!

Further Clarification



These are LOVE stamps

This is a COMMON stamp.



4946-49 Rudolph the Red-Nosed Reindeer



4941-44 Winter Fun

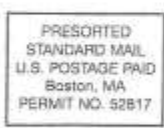
These two stamps belong in CHRISTMAS as do the Evergreen stamps.



Though not small nor square, it is COMMON



We have a category for UNCANCELLED stamps (strips + singles)



NONPROFIT ORGANIZATION U.S. POSTAGE PAID EASTER SEALS

We want these →

Not this ↘

We want these ↗

Not this ↘



All COMPUTER stamps with this design go together even if they look like Christmas.



These stamps are similar but different!

This is a LOVE stamp



The next two are High Value



76¢

These four stamps have no price marked on them.



22¢



71¢



71¢



93¢



These Postcard stamps go into COMMON.

These 39¢ snowflakes belong in CHRISTMAS



Though similar, this is a PRESORTED STANDARD stamp



These modernistic snowflakes belong in CHRISTMAS!



Hope this information helps!

All of the "Pets"
belong in Common,
as do these "Colorful
Celebrations"



The 10 Colorful Celebrations commemorative forever stamps, issued June 3, in a double-sided pane of 20 (convertible booklet format).



The 20 Pets commemorative forever stamps issued August 2.

These four "Songbirds in the
Snow" belong in Christmas.



The four Songbirds in Snow commemorative stamps.



The five Soda Fountain Favorites commemorative forever stamps issued June 30 in a pane of 20 (convertible booklet format).



The 16 National Parks Centennial commemorative stamps.

Both the "Soda Fountain Favorites" and the "National Parks" have both large and small stamps in the series. All of these stamps belong in Commemorative.



The six United States Classics Forever commemorative forever stamps issued June 1 in New York City in a souvenir sheet format.



Six classic United States stamps used as inspiration for the new stamp issue. Images courtesy of the APS Reference Collection.

These "new" "old" stamps belong in Common.

Thank you for your service in trimming stamps. Dealers are willing to buy our stamps that have 1/4 inch to 1/3 inch of paper around the stamp. If the stamp has a border less than that, they can still be sold but at a lower price.

This is an example of a 1/4 inch trim around the stamp.

